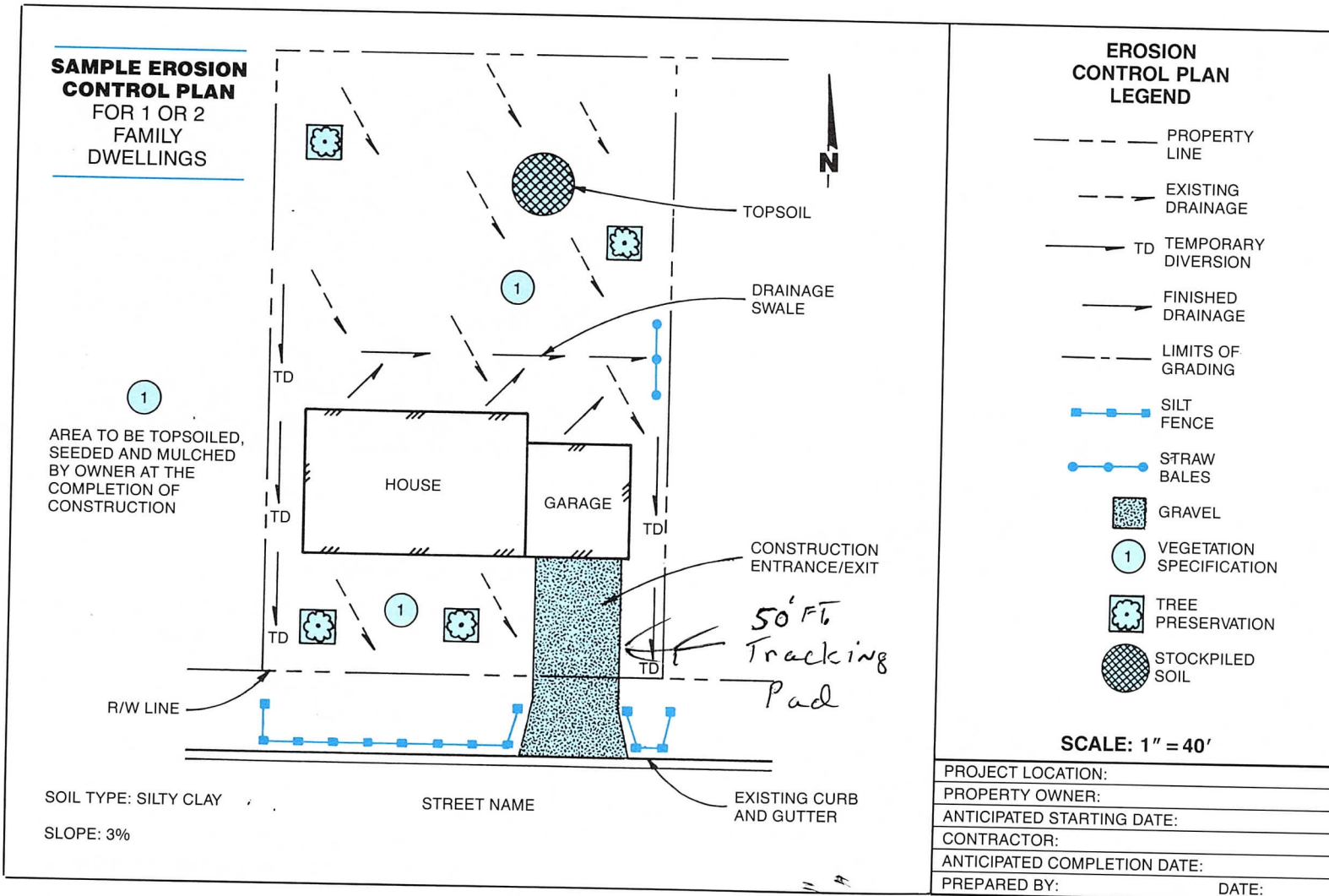


Erosion Control Practices For Home Sites



WARNING! Extra measures may be needed if your site:

- Is within 300 feet of a stream or wetland
- Is within 1000 feet of a lake
- Has a waterway or ditch
- Is steep (slopes of 12% or more)
- Receives runoff from 10,000 sq. ft. or more of adjacent land
- Has more than an acre of disturbed ground

For information on appropriate measures for these sites, call your local building inspector or erosion control office.

Typical Lawn Seed Mixtures

Grass	Percent by Weight	
	Sunny Site	Shady Site
Kentucky bluegrass	65%	15%
Fine fescue	20%	70%
Perennial ryegrass	15%	15%

Seeding rate (lb./1000 sq. ft.)	3-4	4-5
---------------------------------	-----	-----

Source: R. C. Newman, Lawn Establishment, UW-Extension, 1988.